

# Andover Township, NJ

## Construction Business Office and Construction Equipment and Material Storage

PARCELS: Lot: 21 Tax Block: 151



# PROPERTY INFORMATION

52 Stickles Pond Road, Newton NJ, 07860

Sussex County

Parcel ID **Lot: 21 Tax Block: 151**

Acres **97 Acres**

Usable Acres: **48 Acres**

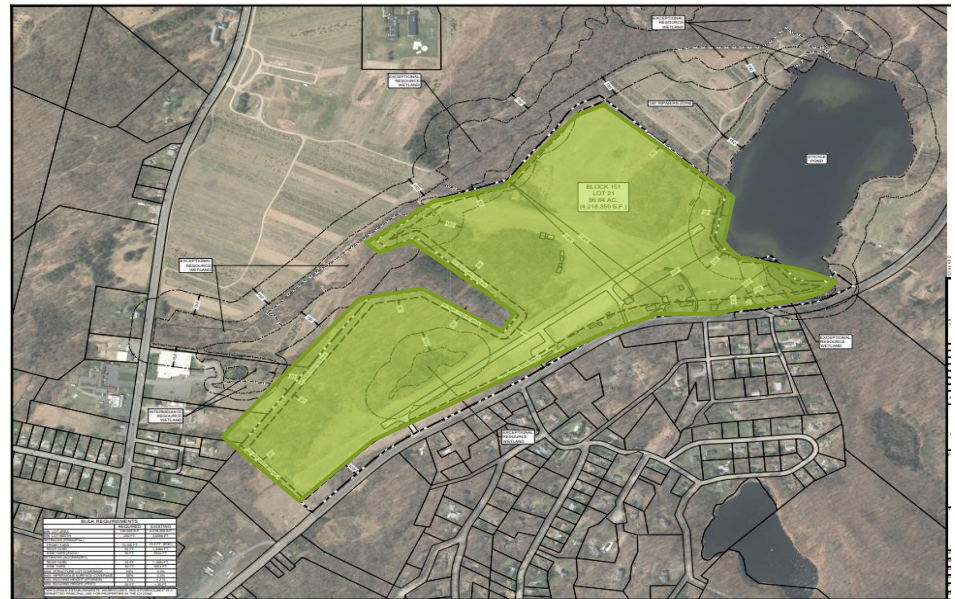
## Proposed Use:

Outdoor storage facility of special order and ordinary construction materials and equipment such as; bulldozer, earthmovers, crushed stone, piping, fencing, and similar, will be stored onsite. A construction business office, receiving area and staff parking will be included.

## Business Hours of Operation:

Monday through Friday, 8am to 5pm.

**Career and Employment Opportunities:** We estimate 10 - 20 full-time employees, salaried management position and standard hourly wages.



# Construction Materials

Aggregate Material

Construction Material height will not exceed 7-8 feet high.



# Construction Materials

Fence, Pipes, etc.



# Storage Container



# Construction Equipment



## Construction Equipment May Include:

- Motor Graders
- Crawler Loaders
- Bulldozers
- Skid-Steer Loaders
- Common Dump Trucks
- Trenchers
- Excavators
- Scrapers
- Backhoe Loader