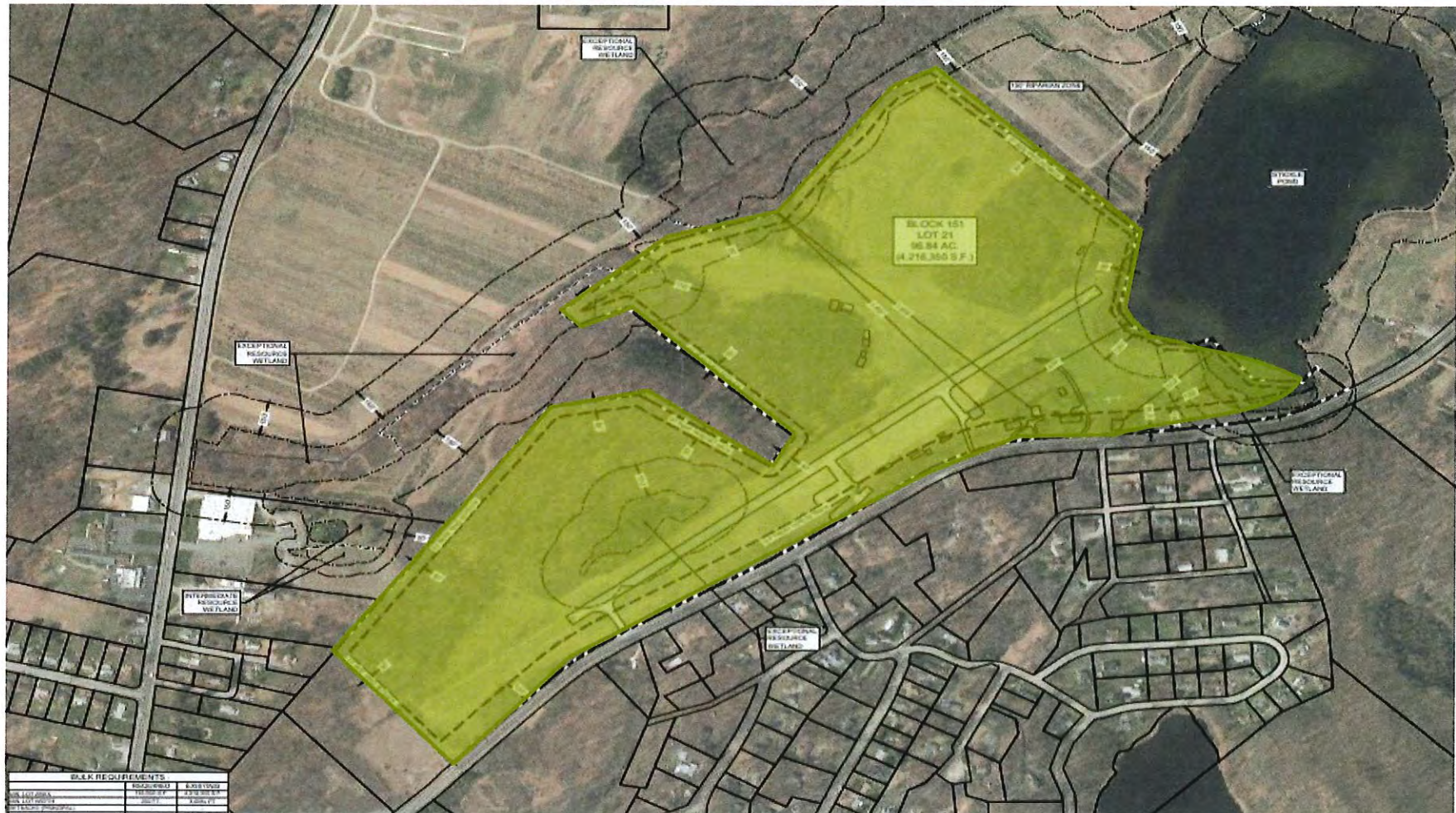


A-1 7-20-21

Andover Township, NJ

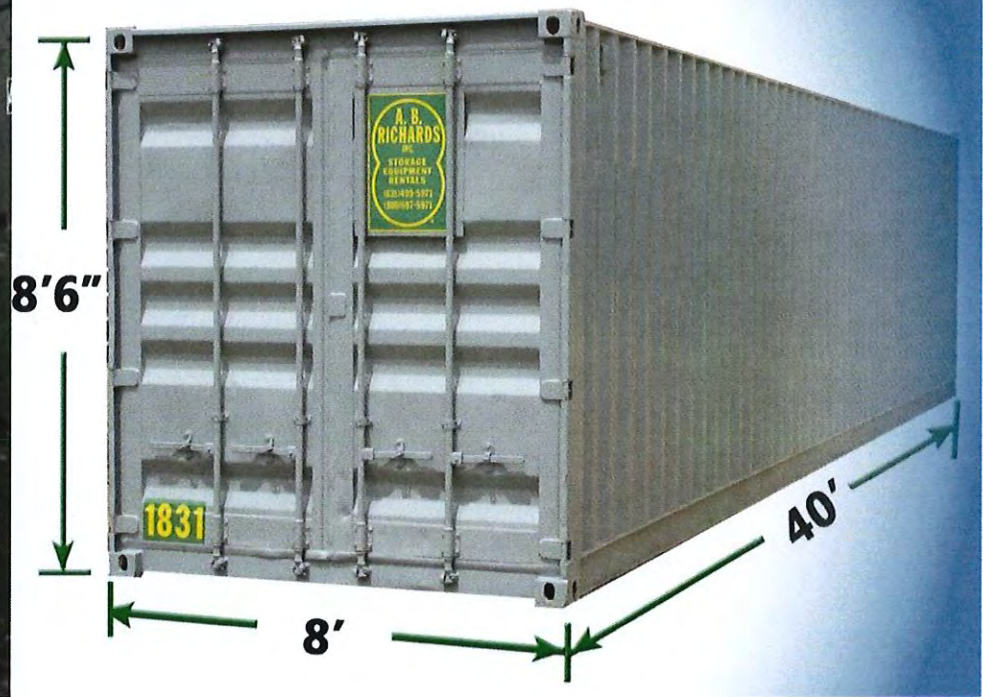
Construction Business Office and Construction Equipment and Material Storage

PARCELS: Lot: 21 Tax Block: 151



A-3 7-20-21

Storage Container



A-4 7-20-21

Construction Equipment



Construction Equipment May Include:

- Motor Graders
- Crawler Loaders
- Bulldozers
- Skid-Steer Loaders
- Common Dump Trucks
- Trenchers
- Excavators
- Scrapers
- Backhoe Loader

AS 1-20-21



Construction Materials

Aggregate Material

Construction Material height will not exceed 7-8 feet high.



A-6 7-20-21



Construction Materials

Fence, Pipes, etc.

