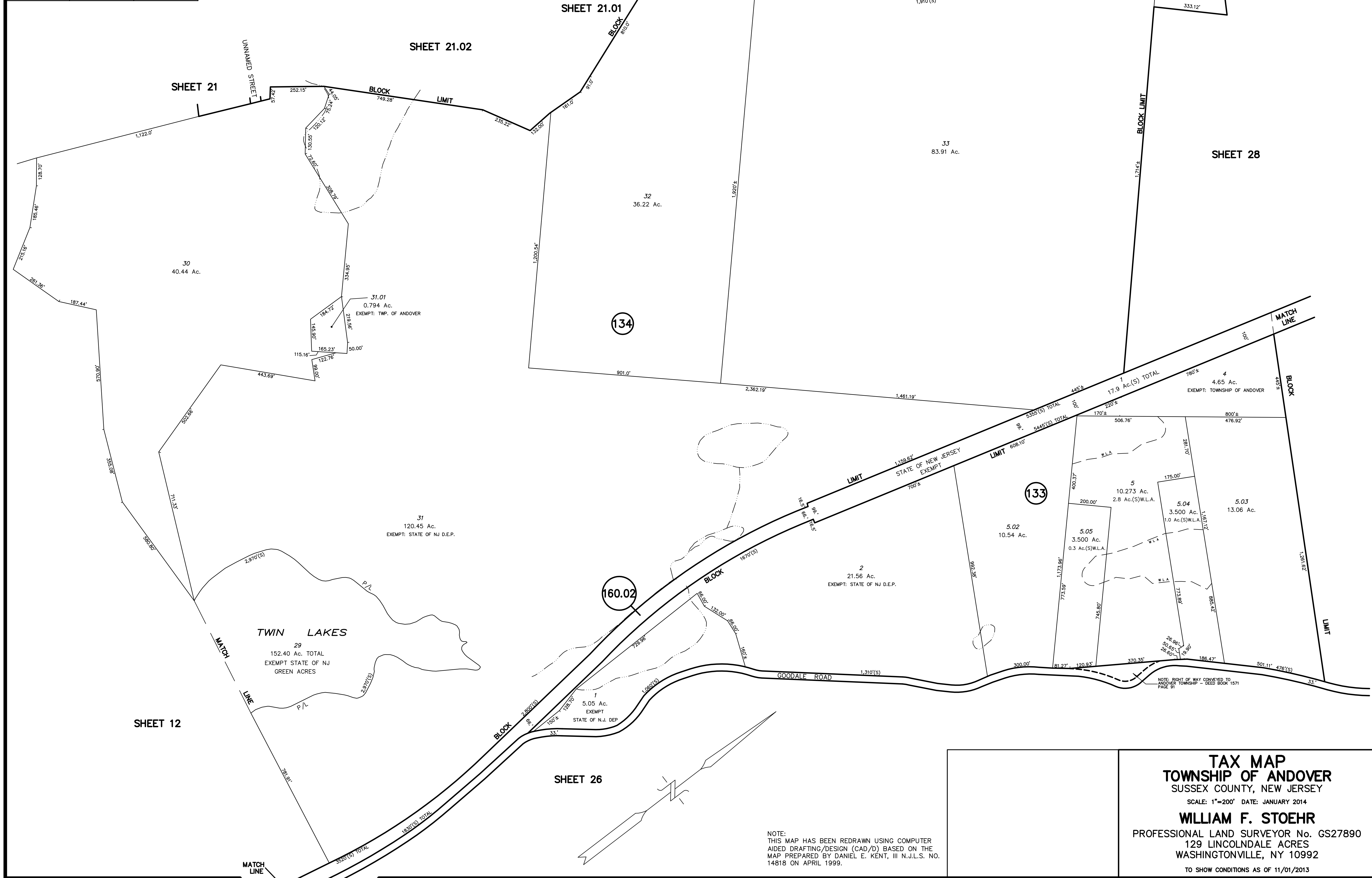


REVISIONS		
DATE	NAME	LICENSE NO.



TAX MAP
TOWNSHIP OF ANDOVER
 SUSSEX COUNTY, NEW JERSEY
 SCALE: 1"=200' DATE: JANUARY 2014
WILLIAM F. STOHR
 PROFESSIONAL LAND SURVEYOR No. GS27890
 129 LINCOLNDALE ACRES
 WASHINGTONVILLE, NY 10992
 TO SHOW CONDITIONS AS OF 11/01/2013