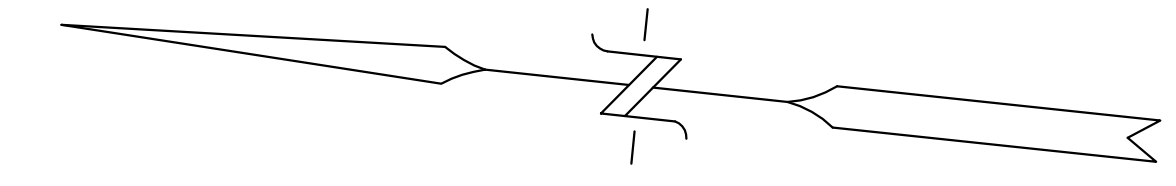
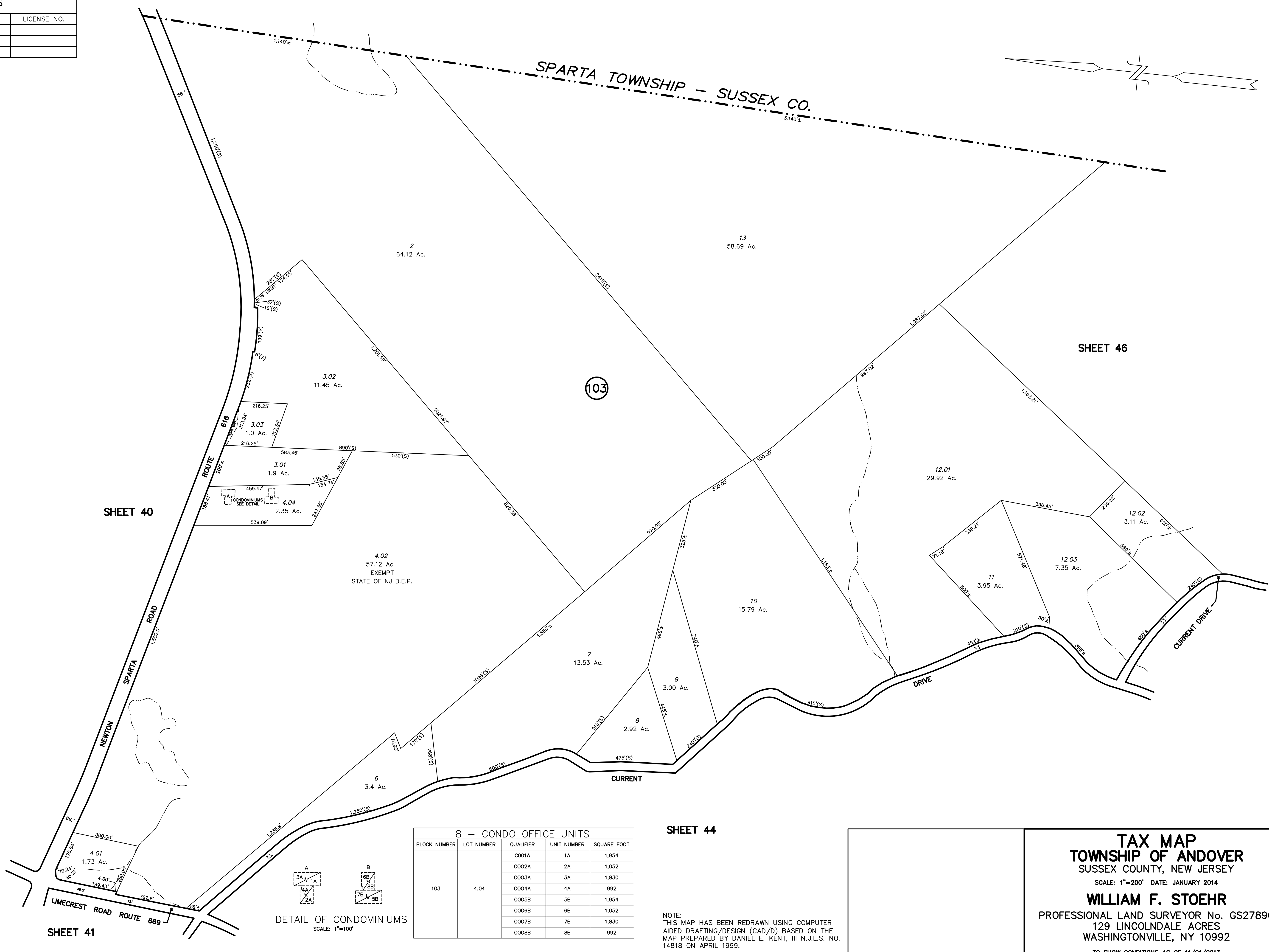


REVISIONS		
DATE	NAME	LICENSE NO.



SPARTA TOWNSHIP - SUSSEX CO.

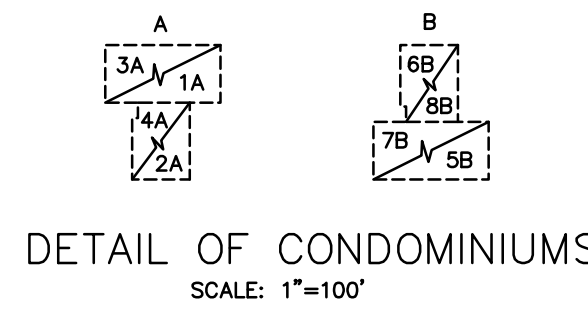


SHEET 40

SHEET 46

SHEET 44

SHEET 41



8 - CONDO OFFICE UNITS

BLOCK NUMBER	LOT NUMBER	QUALIFIER	UNIT NUMBER	SQUARE FOOT
103	4.04	CO01A	1A	1,954
		CO02A	2A	1,052
		CO03A	3A	1,830
		CO04A	4A	992
		CO05B	5B	1,954
		CO06B	6B	1,052
		CO07B	7B	1,830
		CO08B	8B	992

NOTE:
THIS MAP HAS BEEN REDRAWN USING COMPUTER AIDED DRAFTING/DESIGN (CAD/D) BASED ON THE MAP PREPARED BY DANIEL E. KENT, III N.J.L.S. NO. 14818 ON APRIL 1999.

TAX MAP
TOWNSHIP OF ANDOVER
 SUSSEX COUNTY, NEW JERSEY
 SCALE: 1"=200' DATE: JANUARY 2014
WILLIAM F. STOHR
 PROFESSIONAL LAND SURVEYOR No. GS27890
 129 LINCOLNDALE ACRES
 WASHINGTONVILLE, NY 10992
 TO SHOW CONDITIONS AS OF 11/01/2013