

ALTERATION WOODMONT TREATMENT CENTER

293 ROUTE US 206
NEWTON, NJ 07860
SUSSEX COUNTY

COVER SHEET/
ELEVATION

**WOODMONT
TREATMENT
CENTER**
293 ROUTE US 206
NEWTON, NJ 07860
SUSSEX COUNTY

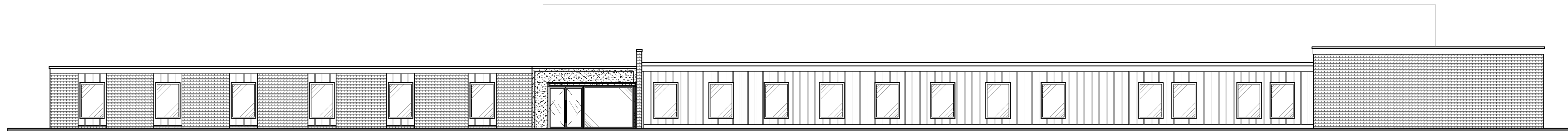
ZONING BD
REVIEW
06.17.2024

REVISIONS:.

PROJECT NO.: 24.12
DATE: 06.14.2024

A001

DRWN: JB/SC
CKD: FA
©AIELLO ASSOCIATES 2024



WEST ELEVATION (ROUTE US 206)

SCALE 3/32" = 1'-0"

SQUARE FOOTAGE CALCULATIONS						
FIRST FLOOR						STORAGE
ROOM	SINGLE OCCUPANT (N/A)		DBLE OCCUPANT		STORAGE	
	REQUIRED	PROVIDED	REQUIRED	PROVIDED	REQUIRED	PROVIDED
BDRM 1	70 SF	-	-	-	10 SF	-
BDRM 2	70 SF	-	-	-	10 SF	-
BDRM 3	70 SF	-	-	-	10 SF	-
BDRM 4	70 SF	-	-	-	10 SF	-
BDRM 5	70 SF	-	-	-	10 SF	-
BDRM 6	70 SF	-	-	-	10 SF	-
BDRM 7	70 SF	-	-	-	10 SF	-
BDRM 8	70 SF	-	-	-	10 SF	-
BDRM 9	-	-	100 SF	143 SF	20 SF	-
BDRM 10	-	-	100 SF	139 SF	20 SF	-
BDRM 11	-	-	100 SF	139 SF	20 SF	-
BDRM 12	70 SF	-	-	-	10 SF	-
BDRM 17	-	-	100 SF	121 SF	20 SF	-
BDRM 18	-	-	100 SF	121 SF	20 SF	-
BDRM 19	-	-	100 SF	120 SF	20 SF	-
BDRM 20	-	-	100 SF	118 SF	20 SF	-
BDRM 21	-	-	100 SF	122 SF	20 SF	-
BDRM 22	-	-	100 SF	123 SF	20 SF	-
BDRM 23	-	-	100 SF	129 SF	20 SF	-
BDRM 24	-	-	100 SF	129 SF	20 SF	-
BDRM 25	-	-	100 SF	124 SF	20 SF	-
BDRM 26	-	-	100 SF	131 SF	20 SF	-
BDRM 27	-	-	100 SF	124 SF	20 SF	-
BDRM 28	-	-	100 SF	116 SF	20 SF	-
BDRM 29	-	-	100 SF	125 SF	20 SF	-
BDRM 30	-	-	100 SF	144 SF	20 SF	-
BDRM 31	-	-	100 SF	124 SF	20 SF	-
BDRM 33	-	-	100 SF	126 SF	20 SF	-
BDRM 35	-	-	100 SF	125 SF	20 SF	-
BDRM 37	-	-	100 SF	129 SF	20 SF	-
BDRM 38	-	-	100 SF	128 SF	20 SF	-
BDRM 39	-	-	100 SF	125 SF	20 SF	-
BDRM 40	-	-	100 SF	125 SF	20 SF	-

AREA OF ITEMS SUBTRACTED FROM GROSS AREA TO PROVIDE THE NET AREA REFLECTED IN TABLE ABOVE	
1 BED (STANDARD TWIN-38X75)	19.52 SF
1 NIGHTSTAND	2.25 SF
1 CHAIR (18X16)	2.25 SF
TOTAL	24.02 SF/OCCUPANT

GENERAL NOTES & REQUIREMENTS

NOTE:

FIRST FLOOR
14 - 2 BED UNITS
6 - 1 BED UNIT

34 BEDS TOTAL FIRST FLOOR

SECOND FLOOR
14 - 2 BED UNITS

28 BEDS TOTAL SECOND FLOOR

TOTAL - 62 BEDS FACILITY

TOTAL CLEAR FLOOR AREA PER SLEEPING UNITS

- 2 OCCUPANT UNITS
50 SF PER OCCUPANT REQUIRED
52.5 SF PER OCCUPANT PROVIDED
- 1 OCCUPANT UNITS
70 SF PER OCCUPANT REQUIRED
87 SF PER OCCUPANT PROVIDED

FLOOR AREA CALCULATIONS (EXISTING)

FIRST FLOOR	23,345 SF
SECOND FLOOR	6,865 SF
TOTAL	30,010 SF

DRAWING INDEX

ARCHITECTURAL	
A001	COVER SHEET
A101	FIRST FLOOR PLAN
A102	SECOND FLOOR PLAN
A201	ELEVATIONS
A202	ELEVATIONS