

WHERE NOT TO LOCATE DETECTORS: To avoid false alarms and/or improper operation, avoid installation of smoke detectors in the following areas:

- Kitchens – smoke from cooking may cause a nuisance alarm.
- Bathrooms – excessive steam from a shower may cause a nuisance alarm.
- Near forced air ducts used for heating or air conditioning – air movement may prevent smoke from reaching detector.
- Near furnaces of any type – air and dust movement and normal combustion products may cause a nuisance alarm.
- The 4 inch "Dead Air" space where the ceiling meets the wall, as shown in Figure 5.
- The peak of an "A" frame type of ceiling – "Dead Air" at the top may prevent smoke from reaching detector.

FURTHER INFORMATION ON DETECTOR PLACEMENT: For further information about smoke detector placement, consult the National Protection Association's Standard No. 74-1984, titled "Household Fire Warning Equipment." For Carbon monoxide alarms, their publication is Recommended Practice #720. These publications may be obtained by writing to the Public Sales Department National Fire Protection Association, Batterymarch Park, Quincy, MA 02269.

CARBON MONOXIDE ALARMS are to be located in every separate sleeping area per NFPA 720 and manufacturer's recommendations.

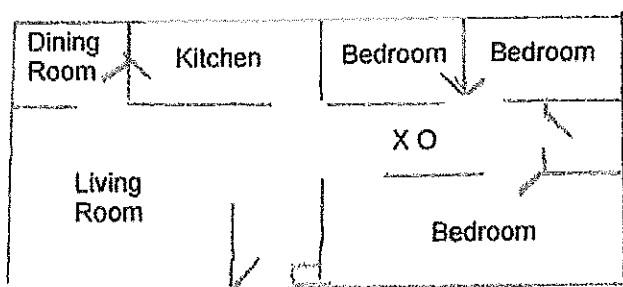
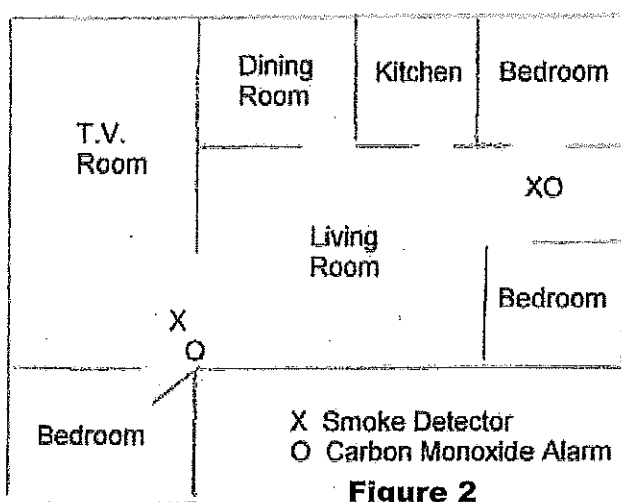
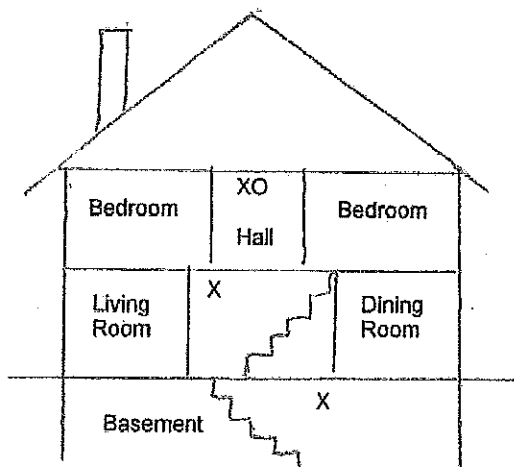


Figure 1 X Smoke Detector
O Carbon Monoxide Alarm

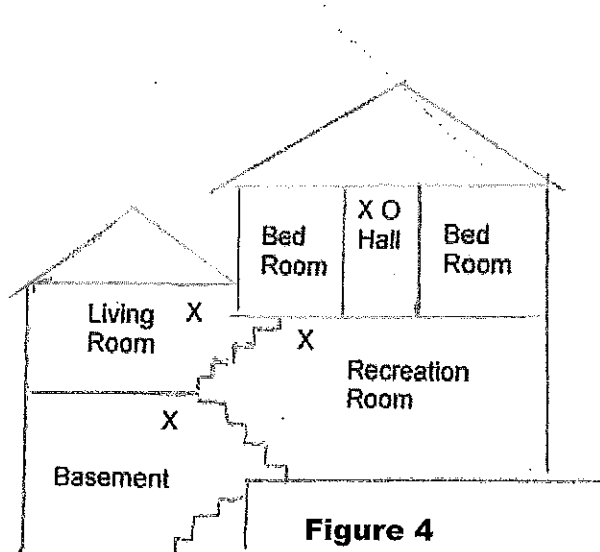


X Smoke Detector
O Carbon Monoxide Alarm
Figure 2



X Smoke Detector
O Carbon Monoxide Alarm

Figure 3



X Smoke Detector
O Carbon Monoxide Alarm

Figure 4

